



# Abbottswood Medical Centre Patient Newsletter

[www.abbottswoodmedicalcentre.co.uk](http://www.abbottswoodmedicalcentre.co.uk)

December 2023

Tel: 01386 552424

Dispensary Line: 01386 561143

## Doctors:

Dr Peter Evans  
Dr Craig Embley  
Dr Paula Baxter  
Dr Catherine Kelly  
Dr Prashanth  
Peddareddy  
Dr Monika Tomas  
Dr Peter Mathias  
Dr James Hopkins

## The Surgery opening hours are:

Monday to Friday 8am - 6.30pm

Dispensary opens at 8.30am to 1pm then 2.30-6.30pm.

Our prescription order line 01386 561143 is open from 9-12 each working morning



We now have a paramedic Claire at the surgery who is able to treat many minor injuries and illnesses and also carry out home visits.

Please give us as much notice as possible if you need to cancel your appointment. This will give us the opportunity to use the time for other patients. Thank you.



With the increase of respiratory rate rising, we are asking patients to wear a face mask to protect yourselves and others when visiting the surgery.

Your local Cranstoun  
is here to support  
you.

Worcester hub  
Castle House,  
14 Castle Street,  
Worcester  
Worcestershire,  
WR1 3AD

T: 0300 303 8200 E:  
[worcs@cranstoun.org.uk](mailto:worcs@cranstoun.org.uk)  
W: [cranstoun.org/WORCS](http://cranstoun.org/WORCS)

Opening hours  
Monday to Friday 9am –  
5pm. Telephone lines open  
from 9.30am.

## CRANSTOUN

Empowering People, Empowering Change

To be a world-class leader in  
rebuilding lives.

To find out more about  
Cranstoun Worcestershire,  
scan this QR Code.

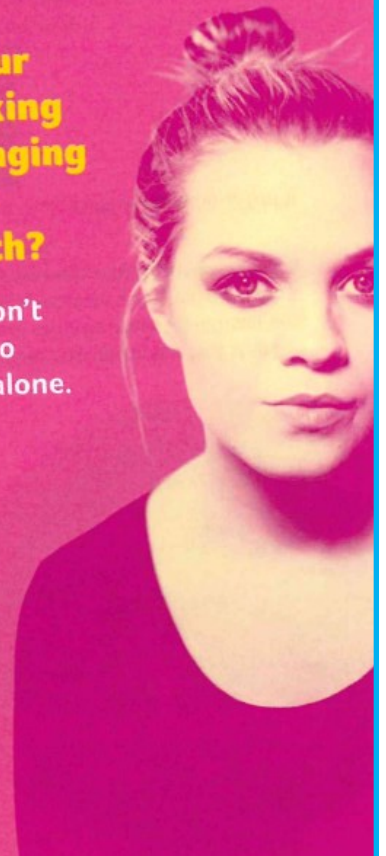


Central office  
Thames Mews  
Portsmouth Road  
Esher  
Surrey  
KT10 9AD  
T: 020 8335 1830  
E: [info@cranstoun.org.uk](mailto:info@cranstoun.org.uk)  
[www.cranstoun.org](http://www.cranstoun.org)

Registered Charity No: 1061582  
Registered Company No: 3306337

Is your  
drinking  
damaging  
your  
health?

You don't  
have to  
cope alone.





## Diabetic eye screening is changing

If your last two diabetic eye screens found no sign of diabetic retinopathy, you will now be invited for screening every 2 years. This follows expert advice.

Diabetic eye screening is important as it helps to prevent sight loss. Have regular eye tests and consult your optometrist or optician if you notice changes to your eyesight.

[www.nhs.uk/conditions/diabetic-eye-screening](http://www.nhs.uk/conditions/diabetic-eye-screening)

## Shingles

We are currently having a lot of queries with patients contacting us regarding the shingles vaccine at the moment.

The shingles vaccine is recommended for some older adults and people with a severely weakened immune system.

### Who should have the shingles vaccine.

From 1 September 2023, you're eligible for the shingles vaccine when you turn 65.

You'll be offered 2 doses of the vaccine. These are given between 6 and 12 months apart.

Your GP should contact you to make an appointment to have your shingles vaccine. Contact your GP surgery if you think you're eligible for the shingles vaccine and you've not been contacted about it.

You'll remain eligible until your 80th birthday.

The surgery will contact you when you become eligible for the shingles vaccine. This will usually be by letter, text message, phone or email.

<https://www.nhs.uk/conditions/vaccinations/shingles-vaccination>

The surgery will be closed on the following days over Christmas -

**Monday 25th December 2023 - Closed (Christmas Day)**

**Tuesday 26th December 2023 - Closed (Boxing Day)**

**Monday 1st January 2024 - Closed (New Years Day)**

If you require help when the surgery is closed please contact 111.



Serious Illness Support Service and Living Well  
Hospice Care at Home Service  
Bereavement Services

For Chipping Campden, Pershore, Broadway,  
Evesham, Bredon, Moreton in Marsh, Bidford and  
Lower Quinton.

ALL OF OUR SERVICES ARE FREE OF CHARGE

PATIENTS

CARERS

THE BEREAVED



Serious Illness Support



Living Well



Hospice Care at Home



Bereavement Services

Jecca's House  
Aston Road  
Chipping Campden  
Glos GL55 6HR

[www.campdenhomenursing.org](http://www.campdenhomenursing.org)

DO YOU HAVE A NEW MOBILE PHONE? HAVE YOU RECENTLY MOVED HOUSE? PLEASE UPDATE US